

A contribution to the genus *Litargus* Erichson, 1846 (Coleoptera: Mycetophagidae) from the Afrotropical Region

К познанию рода *Litargus* Erichson, 1846 (Coleoptera: Mycetophagidae) Афротропической области

J. Háva

И. Гава

Private Entomological Laboratory & Collection, Rýznerova 37/37, Únětice u Prahy, Prague-west CZ-252 62 Czech Republic. E-mail: jh.dermestidae@volny.cz. ORCID: 0000-0001-8076-9538.

Частная энтомологическая лаборатория и коллекция, Прага-запад, Чехия.

Key words: Taxonomy, new species, new records, Coleoptera, Mycetophagidae, *Litargus*, Afrotropical Region.

Ключевые слова: таксономия, новый вид, новая находка, Coleoptera, Mycetophagidae, *Litargus*, Афротропическая область.

Abstract. The two new species, *Litargus* (*Litargus*) *votrubai* Háva, **sp.n.** (Cameroon) and *L. (Litargus) snizeki* Háva, **sp.n.** (Kenya) are described, illustrated and compared with similar species. The following species represent new records: *Litargus (Litargus) kolbei* Grouvelle, 1914 (Malawi, Kenya, South Africa, Uganda), *Litargus (Litargus) conradti* Grouvelle, 1914 (Ivory Coast), *Litargus (Litargus) elegans* Grouvelle, 1914 (Benin, DR Congo) and *Litargus (Litargosomus) balteatus* LeConte, 1856 (Tanzania).

Резюме. В статье описаны два новых вида жуков-грибобоев (Coleoptera: Mycetophagidae) из Африки: *Litargus (Litargus) votrubai* Háva, **sp.n.** из Камеруна, и *L. (Litargus) snizeki* Háva, **sp.n.** из Кении. Для четырех видов приведены новые находки: *Litargus (Litargus) kolbei* Grouvelle, 1914 (Малави, Кения, Южная Африка, Уганда), *Litargus (Litargus) conradti* Grouvelle, 1914 (Кот-д'Ивуар), *Litargus (Litargus) elegans* Grouvelle, 1914 (Бенин, Демократическая Республика Конго) и *Litargus (Litargosomus) balteatus* LeConte, 1856 (Танзания).

Introduction

The small fungus beetle family Mycetophagidae currently contains 28 valid genera and 212 species Worldwide [Háva, 2022]. The genus *Litargus* Erichson, 1846 currently includes 76 species worldwide [Háva, 2022b, 2024; Háva, Coache, 2023 a, b]. During the determination of a mycetophagid collection deposited at the National Museum, Praha, Czech Republic, the author found a new *Litargus* species from Cameroon, supplemented with one new species from the author's collection from Kenya which are described below. Four new faunistic records are reported.

Material and Methods

The material is deposited in the following collections: JHAC — Jiří Háva, Private Entomological Laboratory & Collection, Únětice u Prahy, Prague-West, Czech Republic; NMPC — National Museum, Praha, Czech Republic (J. Hájek).

The size of beetles or of their body parts can be useful in species recognition and thus, the following measurements were made: total length (TL) — linear distance from anterior margin of head to apex of elytra; elytral width (EW) — maximum linear transverse distance.

Specimens of the presently described species are provided with red, printed label with text as follows: «HOLOTYPE [or PARATYPE] name of species sp.n. Jiří Háva det. 2024».

The present work is registered in ZooBank (www.zoobank.org) under LSID urn:lsid:zoobank.org:pub:16394F65-FA3A-4EBB-93BD-BADAC9B-F6A8D.

Results

Litargus Erichson, 1846

Litargus (Litargus) votrubai Háva, **sp.n.**

Figs 1–3.

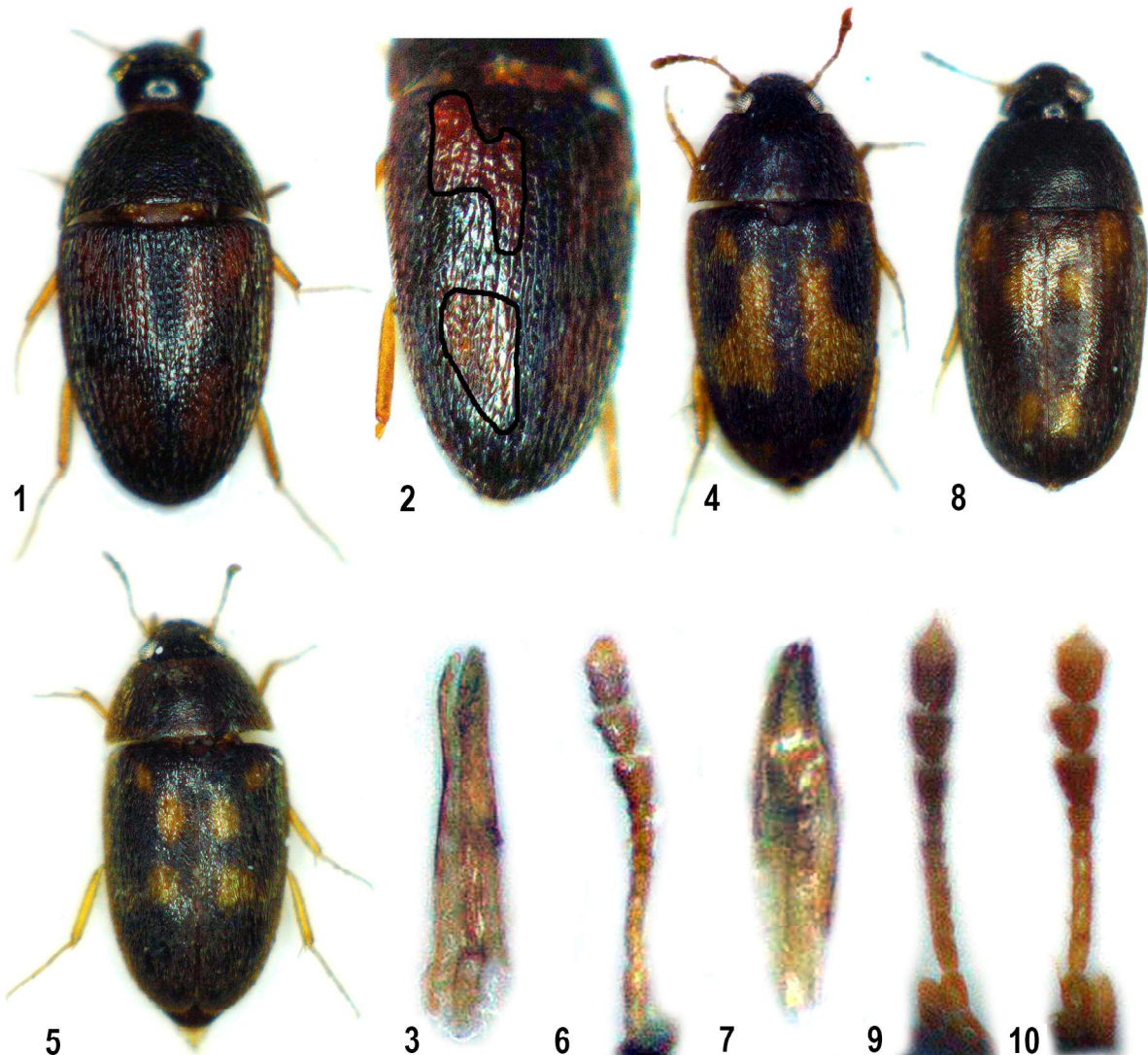
Urn:lsid:zoobank.org:act:FEB240A5-D728-4BB1-A46F-DA9A1DC08F26.

Material. Cameroon, North-West province: holotype, ♂, — Big Babang vill. env., 06°06.698' N, 10°15.938' E, h~1200 m a.s.l., 5–13. III.2008, P. Votruba leg. (NMPC).

Description. *Male.* Body measurements TL 2.2 mm, EW 1.2 mm; oblong-oval, subparallel-sided; weakly convex dorsally, weakly glossy; brown on dorsal and ventral surfaces, covered with short, intermixed yellow and brown recumbent setation.

Head brown, with dense and coarse punctures; covered by yellowish, recumbent setation; labrum brown; eyes prominent laterally in dorsal view, coarsely faceted and slightly emarginate near antennal insertions; antennae with 11 antennomeres (not complete), entirely light brown with yellow setation, antennomeres VIII–XI on left antenna (right antenna missing); palpomeres dark brown, apical maxillary palpomere large, cylindrical.

Pronotum brown, convex dorsally, rugose, with large and dense punctures, covered with intermixed yellow and brown recumbent setation; widest at base, gradually narrowed anteriorly and posteriorly; anterior margin slightly arcuate; sides roundly



Figs 1–10. Details of *Litargus* Erichson species morphology: *L. (L.) votrubai* Háva, sp.n. (1–3), *L. (L.) snizeki* Háva, sp.n., holotype (4, 6–7) and paratype (5), *L. (L.) elegans* Grouvelle (8–9) and *L. (L.) kolbei* Grouvelle (10): 1, 4, 5, 8 — external appearance, dorsal aspect; 2 — elytron with reddish spots; 3, 7 — male genitalia; 6, 9, 10 — antenna.

Рис. 1–10. Детали строения видов рода *Litargus* Erichson: *L. (L.) votrubai* Háva, sp.n. (1–3), *L. (L.) snizeki* Háva, sp.n., голотип (4, 6–7) и паратип (5), *L. (L.) elegans* Grouvelle (8–9) и *L. (L.) kolbei* Grouvelle (10): 1, 4, 5, 8 — внешний вид жука сверху; 2 — надкрылья с красноватыми пятнами; 3, 7 — гениталии самца; 6, 9, 10 — усик.

arcuate; basal margin sinuate, without short and circular grooves on subbasal parts. Scutellum broadly triangular, with short recumbent yellow setation.

Elytra brownish-black with two reddish patterns, covered by intermixed yellow and brown recumbent setation, elongate, subparallel-sided. Epipleuron brown, covered with yellow recumbent setation. Meta-meso ventrite brown, with yellow recumbent setation. Prosternal process narrow.

Legs entirely brown with light brown spines, covered with yellow recumbent setation. Tibiae with long brown spines apically.

Abdominal visible ventrites brown, covered with yellow recumbent setation. Pygidium brown, covered with yellow recumbent setation. Male genitalia as in Fig. 3.

Female. Unknown.

Diagnosis. The new species is similar to *Litargus quadrisignatus* Grouvelle, 1914 but differs from it by the elytral spots

(in *quadrisignatus* each elytron has two large circular spots).

Etymology. Patronymic, dedicated in memoriam to my friend and collector of the new species Petr Votruba (1966–2022), specialist in Cicindelidae and Helotidae.

Litargus (Litargus) snizeki Háva, sp.n.

Figs 6–9.

Urn:lsid:zoobank.org:act:31C0E1CA-B994-4046-B973-8B0EF8890846.

Material. Kenya, *Taita-Taveta County*: Holotype, ♂, «Kenya or., Voi (Tsavo), 26–28.I.1996, M. Snížek lgt.» (JHAC). Paratype, 1♀, same data as holotype, (JHAC).

Description. *Male.* Body measurements TL 2.2 mm, EW 1.1 mm; oblong-oval, subparallel-sided; weakly convex dorsally, weakly glossy; brown on dorsal and ventral surfaces, covered with short, intermixed yellow and brown recumbent setation.

Head brown, with dense and coarse punctures; covered by yellowish, recumbent setation; labrum brown; eyes prominent laterally in dorsal view, coarsely faceted and slightly emarginate near antennal insertions; antennae with 11 antennomeres, entirely light brown with yellow setation, antennal club with three antennomeres (Fig. 6); palpi light brown, apical maxillary palpomere large, cylindrical.

Pronotum brown, lateral sides yellowish, convex dorsally, rugose, with large and dense punctures, covered with intermixed yellow and brown recumbent setation; widest at base, gradually narrowed anteriorly and posteriorly; anterior margin slightly arcuate; sides roundly arcuate; basal margin sinuate, without short and circular grooves on subbasal parts. Scutellum broadly triangular, with short recumbent yellow setation.

Elytra dark brown with yellowish patterns (Fig. 4), covered by yellow recumbent setation other parts covered by brown recumbent setation, elongate, subparallel-sided. Epipleuron brown, covered with yellow recumbent setation. Meta-meso ventrite brown, with yellow recumbent setation. Prosternal process narrow.

Legs entirely brown with light brown spines, covered with yellow recumbent setation. Tibiae with long brown spines apically.

Abdominal visible ventrites brown, covered with yellow recumbent setation. Pygidium brown, covered with brown recumbent setation. Male genitalia as in Fig. 7.

Female. Similar to male, body measurements TL 2.2 mm, EW 1.0 mm, but differs by the arrangement of the elytral spots (Fig. 5).

Diagnosis. The new species is similar to *Litargus kolbei* Grouvelle, 1914 but differs from it by the structure of antennae, male genitalia and arrangement of the elytral spots.

Etymology. Patronymic, dedicated to collector of the new species Miroslav Snížek.

Litargus (Litargus) conradti Grouvelle, 1914

Material. Republic of Côte d'Ivoire: 1♀ — «Ivory Coast, Tan N.P., Platforma 40 m, (light), 17–19.III.2017, B. Massa lgt.», J. Háva det. (JHAC).

Distribution. This species was known from «German East Africa» [Grouvelle, 1914; Háva, 2022a], new to Ivory Coast.

Litargus (Litargus) elegans Grouvelle, 1914

Figs 8, 9.

Material. Republic of Benin: 1♀ — «Benin NNW, 5 km of Tanguieta, direction Tanougou, 28–29.VI.2001, A. Kudrna JR lgt.», J. Háva det. (NMPC). Democratic Republic of the Congo: 1 spm. — «Congo, Buta (Rubi), VII.1906, Ribotti», J. Háva det. (JHAC).

Distribution. This species was known from Cameroon [Grouvelle, 1914; Háva, 2022a], new to Benin and DR Congo.

Litargus (Litargus) kolbei Grouvelle, 1914

Fig. 10.

Material. Malawi: 1 spm. — Mulanje Mts., Likhubula Lodge, h~827 m a.s.l., at light, 15°56'15.7" S, 35°30'4.9" E, 18–25.XI.2018, P. Pacholátko lgt., J. Háva det. (NMPC). Kenya: 1 spm. — «Kusa [malaise trap], 26.XII.2003–4.IV.2004, Ivo Přikryl leg.», J. Háva det. (JHAC). Uganda: 1 spm. — «Gaba, [malaise trap], 28.X–21.XI.2003, Ivo Přikryl leg., J. Háva det.» (NMPC). South Africa: 1 spm. — «Kruger NP, Satara, 8.III.2018, 24°23' S, 31°46' E, O. Sedláček lgt., J. Háva det.» (NMPC).

Distribution. This species was known from Tanzania [Grouvelle, 1914; Háva, 2022a], new to Kenya, Malawi, South Africa and Uganda.

Litargus (Litargosomus) balteatus LeConte, 1856

Material. Tanzania, Dar El Salam: 9 spm. — «plant storage, iii.2023 / CZ Bohemia c., Palkowitschia — import plants, Ušice, iii.2023, P. Jansa lgt.», specimens were collected in the Czech Republic with imported plants from Tanzania, J. Háva det. (JHAC).

Distribution. Cosmopolitan species [Háva, 2022a], new to Tanzania.

Acknowledgements

I am very indebted to Larry G. Bezark (California, U.S.A.) for the comments and English revision to the manuscript.

References

- Grouvelle A. 1914. Descriptions de Coléoptères Africains // Annales de la Société Entomologique de France. Vol.83. P.141–202, 2 plts.
- Háva J. 2022a. World Catalogue of Mycetophagidae (Coleoptera: Tenebrionoidea) // Studies and reports. Taxonomical series. Vol.18. No.2. P.287–331.
- Háva J. 2022b. A new species of *Litargus* Erichson, 1846 from Reunion Island (Coleoptera: Mycetophagidae) // Humanity Space. International Almanac. Vol.10. No.2. P.241–245. <https://doi.org/10.24412/2226-0773-2022-11-2-241-245>.
- Háva J. 2024. Second contribution to the *Litargus jakli* species group (Coleoptera: Mycetophagidae) from Oriental Region // Humanity Space. International Almanac. Vol.13. No.3. P.224–229. <https://doi.org/10.24412/2226-0773-2024-13-3-224-229>.
- Háva J., Coache A. 2023a. A contribution to knowledge of Mycetophagidae (Coleoptera) from Sro Tome and Principe // Faunitaxys. Vol.11. No.32. P.1–5. [https://doi.org/10.57800/faunitaxys-11\(32\)](https://doi.org/10.57800/faunitaxys-11(32)).
- Háva J., Coache A. 2023b. A contribution to knowledge of Mycetophagidae (Coleoptera) from Benin // Faunitaxys. Vol.11. No.60. P.1–4. [https://doi.org/10.57800/faunitaxys-11\(60\)](https://doi.org/10.57800/faunitaxys-11(60)).

Поступила в редакцию 6.6.2024